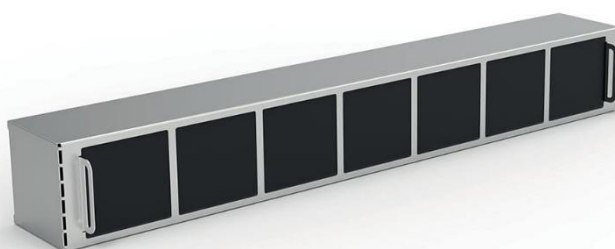
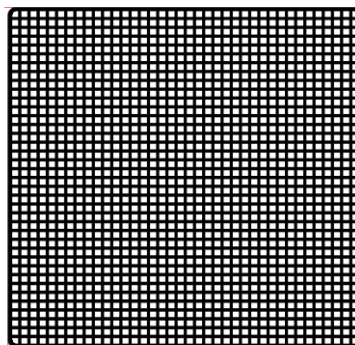
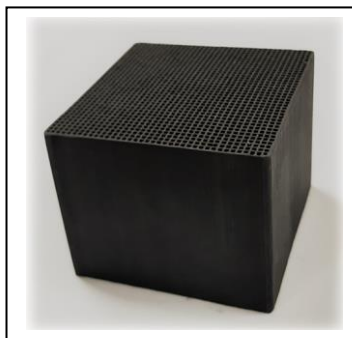


Honeycomb ceramic activated carbon filter



Dimensions: mm 48,5 -0,5 x 48,5 -0,5 x 39,5 -0,2 (height)

1444 cells per honeycomb

~ 1.00 g/mm (length)

Honeycombs filters are ceramic extruded filter moulds. Activated carbon lends the adsorptive functions while a ceramic binder forms the supportive structure. The particularly finely ground activated carbon particles are integrated into the structure of the ceramic in such a way that they are easily and completely accessible for molecular impurities and form a maximum response surface.

Lasting up to 3 years and efficiency is higher than 80%.

Construction and Design

- Low flow resistivity
- Large and freely accessible response surface
- High activated carbon content
- Modular system

Physical and chemical properties

- High adsorption efficiency
- High mechanical strength
- Dust-free
- Temperature stability
- Not combustible and chemically stable
- Thermally regenerative

How to regenerate it:

It can be regenerated in the oven every 2-3 months at a temperature of 200 for 60'.

After regeneration in the oven, allow the activated carbon filter to cool before mounting.